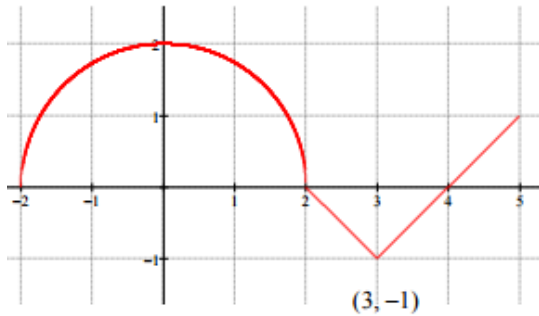


HW Quiz B



Graph of $f(t)$

Given: $g(x) = \int_2^x f(t) dt$ Find each of the following:

- $g(-2)$
- $g'(0)$
- $g''(0)$
- $g(5)$
- $g'(5)$
- $g''(5)$
- Find the equation of the tangent line to the graph of g at $x = 5$.
- Determine the interval(s) for which g is decreasing $-5 < x < 5$. Justify your reasoning.
- Determine the x -coordinate of any points of inflections of g . Justify your reasoning.
- Determine the absolute maximum of g on the interval $[-2, 5]$